

MP2900X Series 5G MPLS Access Router

Datasheet

Overview

MP2900X series modular access router developed by Maipu is one new-generation enterprise-class access router, applicable to enterprise and government customers for their medium & large size branches. It integrates various WAN network technologies, such as Ethernet, SDH, and 5G/4G/3G network, to provide flexible access modes for enterprise users.

MP2900X series router integrates routing, switching, and security functions to support rich encryption algorithms and fully protects data security. The LAN L2/L3 switching function has greatly enhanced the flexibility of the fixed interface.


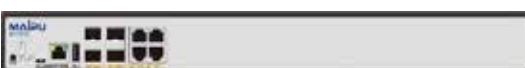
MP2900X series router is the next-generation version of the MP2900 series, which was widely deployed in many countries. It includes several models, which are MP2900X-04D, MP2900X-14D, and MP2900X-24D.

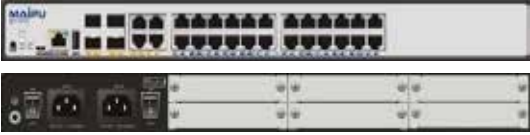
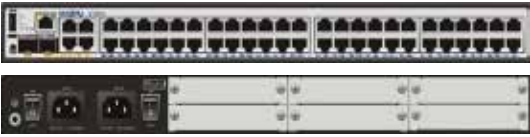
MP2900X-04D-AC(D1) supports one RJ45 console port, one USB interface, four WAN ports, four expansion slots, and dual AC power supplies.

MP2900X-04D(D2) supports one RJ45 console port, one USB interface, four WAN ports, four expansion slots, and dual DC power supplies.

MP2900X-14D-AC(D1) supports one RJ45 console port, one USB interface, four WAN ports, 24 gigabit LAN ports, four expansion slots, and dual AC power supplies.

MP2900X-24D-AC() supports one RJ45 console port, one USB interface, four WAN ports, 48 gigabit LAN ports, four expansion slots, and dual AC power supplies.

 <p>MP2900X-04D-AC(D1)</p>	<ul style="list-style-type: none"> ● Fixed WAN: 4*GE Combo (RJ45/SFP). ● Extension Slots: 4*RM2B extension slots. ● Power: 2*AC power (RPS), 100V-220V 50-60Hz ● 1*RJ45/Micro-USB Console port. ● Dimension (L*D*H): 442mm*380mm*44.2mm(1U).
 <p>MP2900X-04D(D2)</p>	<ul style="list-style-type: none"> ● Fixed WAN: 4*GE Combo (RJ45/SFP). ● Extension Slots: 4*RM2B extension slots. ● Power: 2*DC power (RPS), 48V DC input. ● 1*RJ45/Micro-USB Console port. ● Dimension (L*D*H): 442mm*380mm*44.2mm(1U).

 <p>MP2900X-14D-AC(D1)</p>	<ul style="list-style-type: none"> ● Fixed WAN: 4*GE Combo (RJ45/SFP). ● Fixed LAN: 24*GE copper RJ45 ports. ● Extension Slots: 4*RM2B extension slots. ● Power: 2*AC power (RPS), 100V-220V 50-60Hz. ● 1*RJ45/Micro-USB Console port. ● Dimension (L*D*H): 442mm*380mm*44.2mm(1U).
 <p>MP2900X-24D-AC(D1)</p>	<ul style="list-style-type: none"> ● Fixed WAN: 2*GE combo (RJ45/SFP), 2*GE copper RJ45 ports. ● Fixed LAN: 24*GE copper RJ45 ports. ● Extension Slots: 4*RM2B extension slots. ● Power: 2*AC power (RPS), 100V-220V 50-60Hz. ● 1*RJ45/Micro-USB Console port. ● Dimension (L*D*H): 442mm*380mm*44.2mm(1U).

Highlights

Highlights	Benefits
Flexible uplink	MP2900X integrates fixed WAN and LAN interfaces. The WAN uplink supports various mainstream WAN access link technologies, such as Ethernet, 5G/4G, E1/CE1, POS, and V.35 serial line.
Extensible modular slots	MP2900X series aggregation router is modular designed. it has enough expansion slots. The whole device supports 4 extended slots.
High performance	<ul style="list-style-type: none"> ● Multi-core high performance processor. ● 10/100/1000M high-speed ethernet WAN/LAN port. ● Built-in hardware acceleration engine, high encryption performance. ● Maipu Express Forwarding (MEF) technologies, speeding up forwarding and processing of data packets.
5G Ready	The MP1900X/2900X/MP3900X series routers are built for future 5G networks, with higher throughputs with 5G NR. WAN networks are looking at wireless WAN as primary transports for different use cases for improved throughputs and latency.
Integrated Hardware	MP2900X series router supports up to 24/48 fixed 1000M switch access ports, providing the IP terminal access capability and meeting the requirement of the user for integrating the routing and switch to construct the access network.
Rich software features	<ul style="list-style-type: none"> ● Support multiple WAN protocols: DDR, PPPoE, EDP, DHCP, Static, 5G/4G ● Support typical TCP/IP services: DHCP, DNS, NAT, GRE, L2TP... ● Support advanced protocol, such as BGP, MPLS, VPLS. ● IPv6 Ready, fully support IPv6 features.
High reliability and business continuity	<ul style="list-style-type: none"> ● Optional redundant power supplies (RPS), support dual AC power. ● Redundant WAN connection for failover protection and load balancing. ● Dynamic failover protocols such as VRRP/VBRP, backup interface, track IP.
Easy O&M	<p>Multiple management methods: standard SNMP monitoring and management, Web-based GUI, SD-WAN based management, traditional command line interface.</p> <p>Built-in Embedded Event Platform (EEP), allow the customer to monitor critical event, and automatic execute pre-defined actions.</p>
Service convergence	<ul style="list-style-type: none"> ● Provide network security with integrated application inspection firewall. ● High-performance VPNs: IPSec, DVPN, L2TP over IPSec.
Security	Built-in firewall features, stateful IPS, URL Filtering, DPI, Complete VPN access.
ZTP	Zero-Touch (USB, DHCP, EDP...), easy for installation and configuration.

Product Specifications

Hardware Specification

Hardware specification	MP2900X-04D-AC(D1)	MP2900X-04D(D2)	MP2900X-14D-AC(D1)	MP2900X-24D-AC(D1)
CPU	1.2GHz Dual Core	1.2GHz Dual Core	1.2GHz Dual Core	1.2GHz Dual Core
Memory	1GB	1GB	1GB	1GB
Flash	8GB	8GB	8GB	8GB
Fixed WAN interfaces	4* GE combo (RJ45/SFP)	4* GE combo (RJ45/SFP)	4* GE combo (RJ45/SFP)	2* GE combo (RJ45/SFP), 2*GE copper RJ45
Fixed LAN interfaces	N/A	N/A	24*GET RJ45	48*GET RJ45
WAN Throughput	1Mpps	1Mpps	1Mpps	1Mpps
Extension slots	4*RM2B WAN slots	4*RM2B WAN slots	4*RM2B WAN slots	4*RM2B WAN slots
USB	1	1	1	1
Console port	1	1	1	1
Dimension (L*D*H)	442×380×44.2mm(1U)	442×380×44.2mm(1U)	442×380×44.2mm(1U)	442×380×44.2mm(1U)
Power supply	2*AC power (RPS), 100V-220V, 50-60Hz.	2*DC 48V power (RPS)	2*AC power (RPS) 100V-220V 50-60Hz	2*AC power (RPS), 100V-220V, 50-60Hz.
Power consumption	≤41W	≤41W	≤54W	≤65W
Working Temperature	0°C~45°C	0°C~45°C	0°C~45°C	0°C~45°C
Work humidity	5%-85%/RH	5%-85%/RH	5%-85%/RH	5%-85%/RH
Weight	≤4.3KG/4.7KG	≤4.3KG/4.7KG	≤4.7KG/5.1KG	≤4.9KG/5.3KG

Software Specification

Software features	
WAN Protocol	DDR, NDIS, PPPoE, Bridge Group, EDP, HDLC, FR
LAN Protocol	STP/RSTP/MSTP, MAC management, 802.1q VLAN, LACP, Loopback Detection, SPAN, LLDP, Port-isolate, Error-disable, ULFD, Port Security, QinQ, Voice VLAN
TCP/IP Protocol	DHCP, DNS, DDNS, NAT, NAT64, NAT66, NAT ALG, IPIP, GRE, L2TP/L2TPv3
IPv4 Routing protocol	Static, RIP, OSPFv2, IS-IS, BGP, Policy Routing, SR
IPv6 Routing Protocol	IPv6 Static, RIPng, OSPFv3, IS-ISv6, BGP4+, IPv6 Policy Routing, SRv6
IPv6 function	IPv4/IPv6 Dual-Stack, IPv6 ND, IPv6 PMTU, IPv6 ACL, ICMPv6, DNSv6, DHCPv6, GREv6
IPv6 Transition Tunneling	IPv6 over IPv4, 6to4, ISATAP
Multicast	IGMP v1/v2/v3, PIM-DM/PIM-SM, SSM, MVPN, NG MVPN, MSDP, MLD, IPv6 PIM, MBGP
VPN	IPSec, PKI, MPLS, VPLS, VPWS, L3VPN, OAM, 6PE, VRF, DVPN, VxLAN

MPLS	LDP, MPLS L3VPN, MPLS L2VPN, MPLST TE, IP FRR, LDP FRR, TE FRR
Security	ACL, SSH, CPU protection, Firewall, IPS, URL Filter, AAA, IKE, PKI, 802.1X, URFP
QoS	FIFO, PQ, FQ, WFQ, CBWFQ, LLQ, RSVP, CAR, H-QoS, traffic shaping, Rate Limitation
Reliability	Backup interface, VRRP/VRRPv3, VBRP, IPSLA, Track, BFD/BFDv6
SDN Ready	ZTP, IPFIX, Telemetry, Netconf
Management & Monitoring	Keepalive, NTP, EEP, RMON, CWMP, CLI, SSH, HTTP/HTTPS, SNMP V1/V2/V3, Telnet, PING, Trace Route, Login, FTP, TFTP, SFTP, TR069, IP-SLA

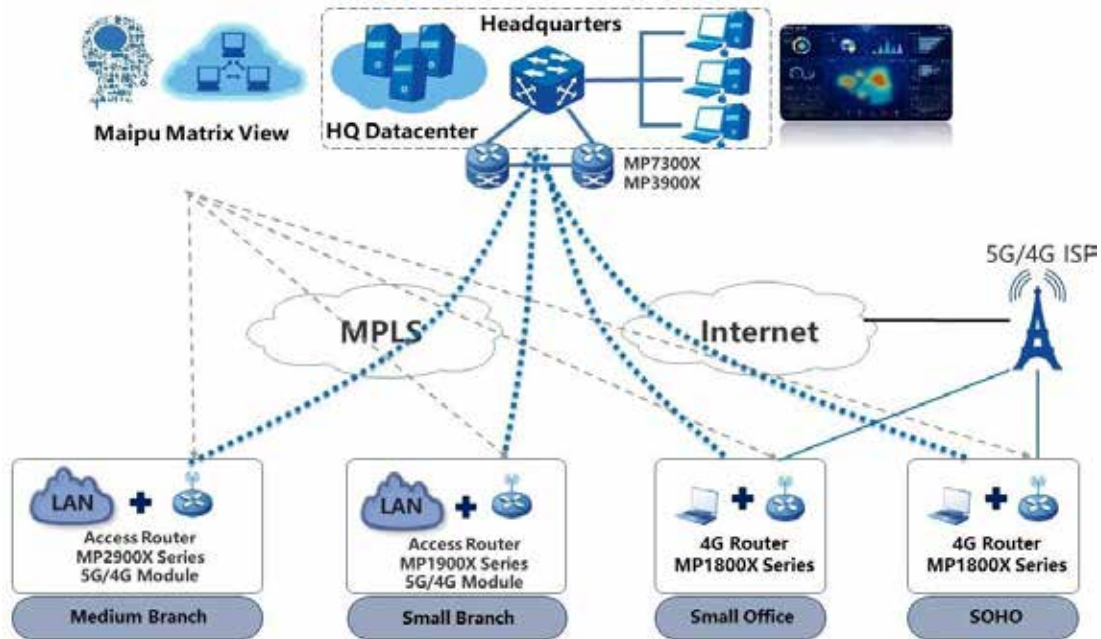
Extension Modules

RM2B WAN Module	
Modules	Description
RM2B-4E1	Four-port non-channelized E1 module
RM2B-4CE1	Four-port channelized E1 module
RM2B-2SA	Dual-port high-speed V35/24 serial module
RM2B-4GET	Four-port gigabit ethernet electrical WAN interface module
RM2B-4GEF	Four-port gigabit ethernet fiber WAN interface module
RM2B-4G-LTE	E1 Version: Single 4G module, 1 sim slot, LTE-FDD (band: 1/3/5/7/8/20), TD-LTE (band: 40), WCDMA (band 1/5/8)
RM2B-4G-LTE-A	V2 Version: Single 4G module, 1 sim slot, LTE-FDD (band: 1/3/5/8), TD-LTE (band: 38/39/40/41), WCDMA (band b1/b8)
RM2B-5G-M	V2 Version: RM2B-5G-M, Single-port 5G card, support NSA and SA, support 5G n1/n28/n41/n77/n78/n79 band; LTE-FDD (Band:b1/b2/b3/b5/b7/b8/b20/b28), LTE-TDD:(Band:b34/b38/b39/b40/b41) ,WCDMA (band b1/b2/b5/b8)

Application Scenario

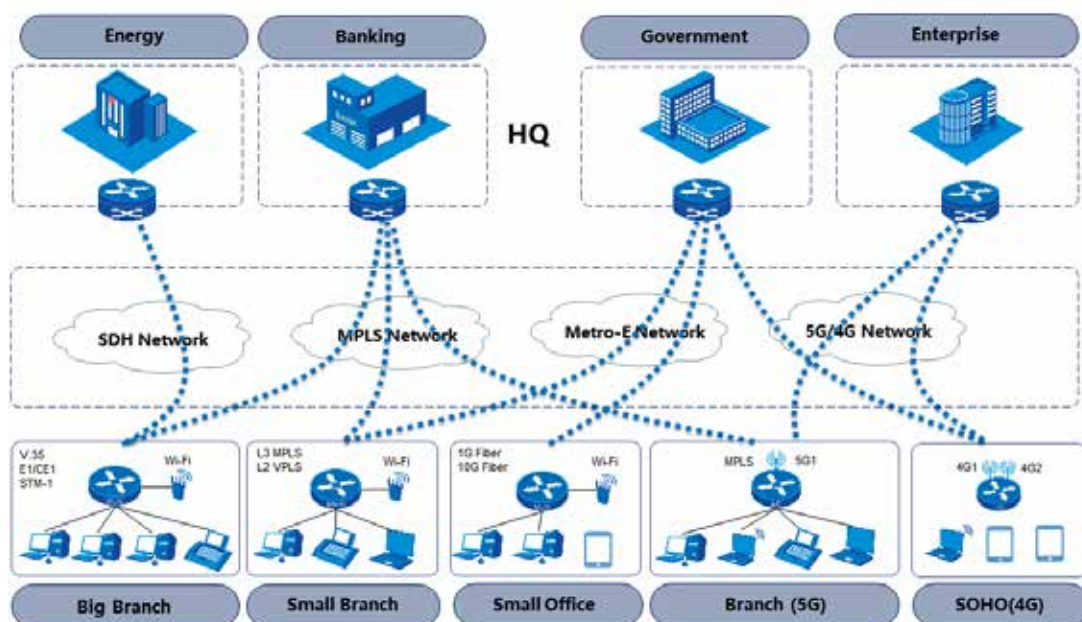
Enterprise WAN Solution

Maipu can provide total solution of enterprise WAN network. MP1800X/1900X/2900X series access router is working at enterprise branch offices and supports multiple physical links, such as MPLS links, Internet links, and 5G/4G mobile network links. MP3900X/MP7300X/MP7500X series aggregation router is working at enterprise HQ. Maipu Matrix View is SNMP centralized managed platform.



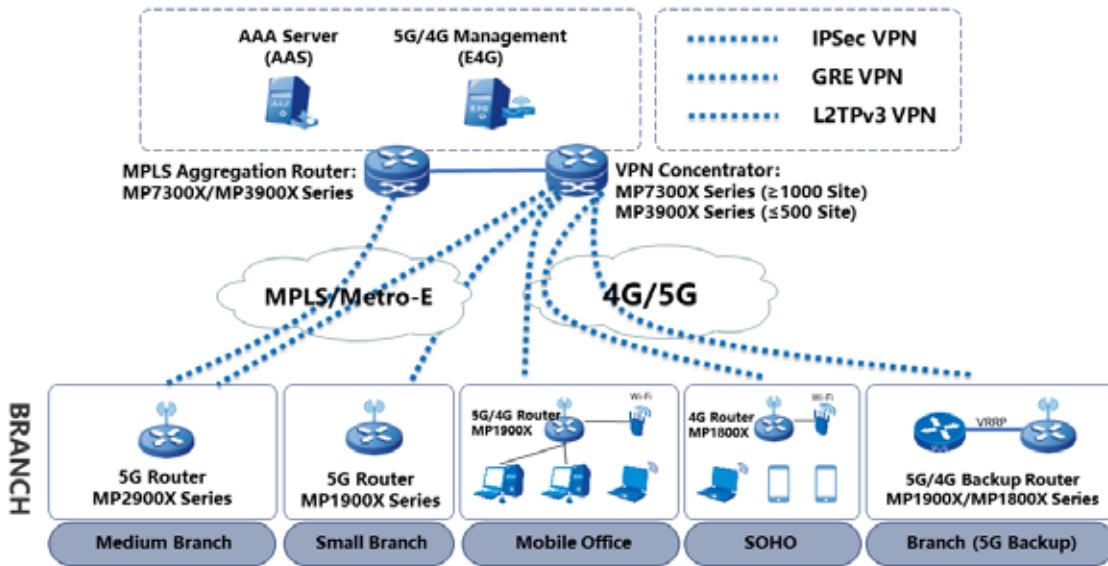
Telecom Managed Service

In this scenario, Maipu MP1800X/1900X/2900X series routers are used as enterprise branches egresses and provide flexible WAN access, to support SDH, MPLS, Metro-E, and 5G/4G links, helping the customer reduce the OPEX, CAPEX and improve customer's network experience.



Enterprise VPN Solution

Maipu MP1800X/1900X/2900X series router provides various VPN access functions for communication between branches and headquarters over multiple physical links. Secure tunnels such as GRE, L2TP, IPsec, and DVPN tunnels can be set up between the HQ and branches for secure data access and transmission.



Order Information

Router Host	
Host model	Description
MP2900X-04D-AC	D1 Version: One RJ45 console port, one micro USB console port, one USB interface, four 1000M Combo WAN ports, four RM2B slots, Dual AC power
MP2900X-14D-AC	D1 Version: One RJ45 console port, one micro USB console port, one USB interface, four 1000M Combo WAN ports, 24 GE LAN ports, four RM2B slots, Dual AC power
MP2900X-24D-AC	D1 Version: One RJ45 console port, one micro USB console port, one USB interface, four 1000M WAN ports (two Combo), 48 GE LAN ports, four RM2B slots, Dual AC power
MP2900X-04D	D2 Version: One RJ45 console port, one micro USB console port, one USB interface, four 1000M Combo WAN ports, four RM2B slots, Dual DC power
RM2B WAN Module	
Modules	Description
RM2B-4E1	V5 Version: Four-port non-channelized E1 WAN module
RM2B-4CE1	V3 Version: Four-port channelized E1 WAN module
RM2B-2SA	V2 Version: Dual-port high-speed V35/24 serial WAN module
RM2B-4GEF	V1 Version: Four-port gigabit ethernet fiber WAN module
RM2B-4GET	V2 Version: Four-port gigabit ethernet electrical WAN module
RM2B-4G-LTE	E1 Version: Single 4G module, 1 sim slot, LTE-FDD (band: 1/3/5/7/8/20), TD-LTE (band: 40), WCDMA (band 1/5/8)
RM2B-4G-LTE-A	V2 Version: Single 4G module, 1 sim slot, LTE-FDD (band: 1/3/5/8), TD-LTE (band: 38/39/40/41), WCDMA (band b1/b8)
RM2B-5G-M	V2 Version: RM2B-5G-M, Single 5G module, 2 sim slots, support NSA and SA mode. Support 5G (Band: n1/n28/n41/n77/n78/n79); LTE-FDD (Band: b1/b2/b3/b5/b7/b8/b20/b28), LTE-TDD: (Band: b34/b38/b39/b40/b41), WCDMA (band b1/b2/b5/b8)

Bismark Colombia, S.A.S.
Cra. 7 # 84A - 29, Of. 301
Bogotá, Colombia.
PBX: (+57) (601) 743-2828

info@bismark.net.co

Síganos:



@BismarkColombia

Distribuidor autorizado:

The Bismark logo features the word "bismark" in a lowercase, sans-serif font. Above the letter "i" is a small graphic consisting of three horizontal bars in blue, yellow, and red.

bismark.net.co

All rights reserved. Printed in the People's Republic of China.

No part of this document may be reproduced, transmitted, transcribed, stored in a retrieval system, or translated into any language or computer language, in any form or by any means, electronic, mechanical, magnetic, optical, chemical, manual, or otherwise without the prior written consent of Maipu Communication Technology Co., Ltd.

Maipu makes no representations or warranties with respect to this document contents and specifically disclaims any implied warranties of merchantability or fitness for any specific purpose. Further, Maipu reserves the right to revise this document and to make changes from time to time in its content without being obligated to notify any person of such revisions or changes.

Maipu values and appreciates comments you may have concerning our products or this document. Please address comments to:

Maipu Communication Technology Co., Ltd
No.16, Jiuxing Avenue
High-tech Park
Chengdu, Sichuan Province
P. R. China
610041
Tel: (86) 28-65544850,
Fax: (86) 28-65544948,
URL: [http:// www.maipu.com](http://www.maipu.com)
Email: overseas@maipu.com

All other products or services mentioned herein may be registered trademarks, trademarks, or service marks of their respective manufacturers, companies, or organizations.