

RS420

RS420 Corporate router

Introduction

By combining two of the most popular fixed WAN access methods (Ethernet and Fiber) and 4G connectivity, as an extremely effective backup mechanism, the RS420 router family is the ultimate IP communications solution for small and medium offices in WAN services up to 300Mbps.

The RS420 router family also covers the main requirements for LAN connectivity including a 4xport GE switch, a Wi-Fi 6 dual radio access point depending on the model and a WLAN controller for additional APs.

The router delivers advanced encryption and security with IPSec VPNs with exceptional performance.

Product Highlights

- Flexible WAN connectivity: FTTH/Fiber
- Integrated switch for local devices
- VPN Gateway
- Models with LTE modem and/or Wi-Fi 6 access point
- Smart design, no fan, silent

Interfaces

2x WAN ports	1x GE and 1xSFP GE
LAN	4-switch ports 10/100/1000 Mbps
Mobile access (4G)	Yes (LTE Cat.4)
Wi-fi 6 Access Point	Dual radio(2,4 & 5 GHz) MIMO 2x2
USB 2.0 host	Yes (for future purposes)
Console port	Yes
Reset button	Yes



Competitive Advantage

Oriented to professional networks	The RS420 series are a professional family routers specially adapted to SMEs or branch locations
Extensive local connectivity	4x 10/100/1000 Ethernet ports with advanced VLAN functions, 802.1p/q/x, and a Wi-Fi 6 access point.
Professional software(OSDx)	OSDx command-line configurable operating system, backed by hundreds of thousands of units in the most demanding environments and carrier services.
Designed for work areas	Fanless-metal housing, they offer long-term reliability for business-critical applications and make them suitable for office installation(no noise).

Key Features

- **1 Gigabit Ethernet or SFP WAN connection.** The RS420 family routers are reliable in branch office/SOHO scenarios thanks to their WAN connections and optimized architecture with hardware encryption.
- **4xGE switch.** The built-in switch is ideal for small offices because it eliminates the need for an external switch, thus reducing costs and points of failure. Auto detectable 10/100/1000 speed, duplex and self-negotiable ports.
- **Secured communications** Corporate communications require corporate security. The RS420 router provides state-of-the-art in security: ACLs, Firewall, 802.1x, IPSec, Level 7 filtering (optional deep packet inspection required)
- **No fan. Silent.** Lack of space in small offices often means that routers have to be placed in the work area. The RS420 routers are specially designed for such environments.
- **WLAN controller** The RS420 router includes a WLAN controller and lets you configure small- and mid-sized WLAN networks with up to 18 access points. The software continually monitors the entire wireless network for troubleshooting.
- **4G connectivity.** 4G-LTE wireless access is the perfect backup medium as it uses different infrastructure to fixed connections. The router can manage 4G-LTE and fixed connections simultaneously for load-balancing purposes.
- **Wi-Fi 6 embedded access point** With the RS420 routers, you also have the option of a Wi-Fi 6 access point dual radio(2.4 and 5 GHz) with 2x2 MIMO antenna technology and external access point controller. Multi-SSID configuration supported.
- **Advanced services.** The RS420 router software includes all the advanced functions needed in corporate networks and operator services, ready for the most demanding scenarios like SDWAN and managed services.
- **Console port** Managed services from carriers or ISPs usually requires out-of-band management to prevent them from interfering with customer networks. The console port is the most common method for this management.

HARDWARE TECHNICAL FEATURES

LAN connectivity

4x 10/100/1000 ports (LAN/WAN/DMZ configurable)
RJ45 connector, 802.3i, 802.3u, 802.3ab, autosensing, IEEE 802.3u, VLAN and 802.1x

Wi-Fi 6 interface (Some models)

Dual radio access point (2.4/5 GHz)
2x2 MIMO external antennas (SMA-RP connector)
WEP, WPA, WPA2 & WPA3 security. WMM QoS, multi SSID

Models without Wi-fi/with Wi-fi:

RCRS420H101, RCRS420H102(4G Europe), RCRS420H103(4G America)
RCRS420H104, RCRS420H105(4G Europe), RCRS420H106(4G America)

WAN connectivity: Dual WAN ports

1x 10/100/1000 LAN port
1x 1000 Mbps SFP slot

WWAN interface (Some models)

Built-in hardware module modules for Europe and LATAM
Category 4 up to 150Mbps DL and 50 Mbps UL
2 External antennas. SMA connector

Dimensions and environmental specifications

Size: 180mm X 110mm X 28mm (excluding antenna connectors)
Format: Desktop, wall
Temperature: 0 to 45°C

SOFTWARE TECHNICAL FEATURES

IP protocol

ARP, ARP Proxy, MTU discovery, NAT/PAT, ICMP, BFD
Static and dynamic routing: RIP, OSPF, BGP, policy based routing(PBR)
Virtual Router Forwarding (Multi-VRF)

Security (1)

IPSec support in transport and tunnel mode.
Pre-shared authentication, RSA, Certificates, MDS, SHA-1
Encrypted: DES (56 bits), 3DES (168 bits), AES (128, 192 and 256 bits)

IP services

FTP, SFTP, SSH, Telnet server and client
NTP, LDAP, Syslog, SCP client. TFTP server
DHCP server/client/relay, DNS Proxy, dynDNS

IPv6

Dual Stack, IPv6oIPv4, IPv4oIPv6, GRE, 6rd, DHCP, ICMPv6, SLAAC
Static and dynamic routing RIPng, OSPFv3, MP-BGP
Multicast: MLD, MLDv2, Listener, Querier

Management (1)

CLI configuration and storage in a plain text file
RADIUS and TACACS+ AAA support, Netflow, RMON, SNMPv1, v2c and v3
Cloud Net Manager tool(HTTPS based) and API restconf support

IP protocol (2)

Multicast routing: IGMP (v1,v2, v3), PIM-SM, MSDP, MLD, MLDv2
IPSLA service probes (delay, packet loss, jitter)
High availability: VRRP, HSRP

Security (2)

MAC filtering. Static and dynamic access lists(ACLs)
Session-based Firewall
Deep packet inspection(L7 firewall)

Quality of Service(QoS)

Classification, marking, BW management, BW prioritization and limitation
Strict policies (PQ), Low latency (LLQ), by weight/type (WFQ, CBWFQ)
802.1p tagging. DSCP/ToS/Cos/proprietary mapping

Wi-fi services

WEP, WPA, WPA2 and WPA3(Roadmap) security. WMM QoS
Multi-SSID

SDWAN networks

Overlay over hybrid networks with App-aware routing, QoS and App Visibility
Central SD-WAN flow control including Zero Touch Provisioning
Applications Service Chaining

ADDITIONAL TECHNICAL FEATURES

LEDs and Power Supply

Power, System Status, Wi-fi and LTE
Power Supply range btw 100 to 240 VAC and 50 to 60Hz

Console port

RJ-45 female

Certifications and standards:

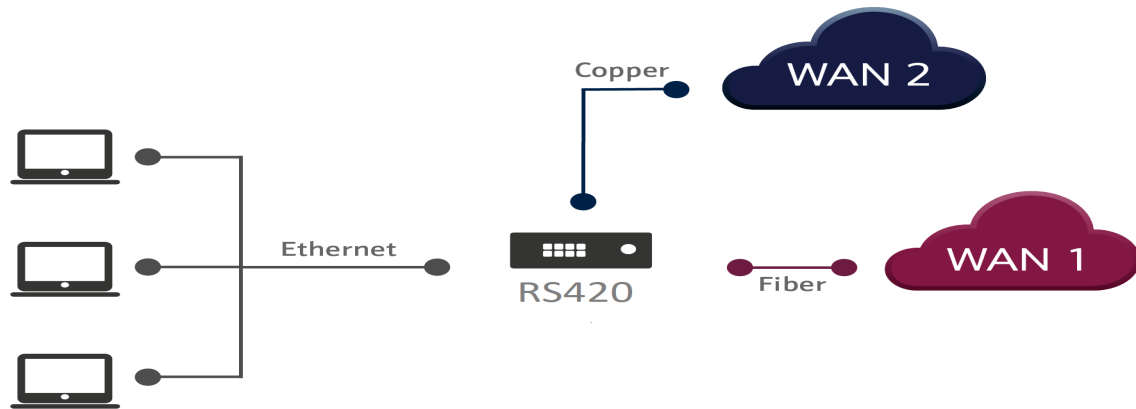
CE

Content of delivery

2x LTE/UMTS omni-directional antennas
1x Ethernet cable, 2m
2x WiFi antennas, 1x Console cable

Scenarios

2



Bismark Colombia, S.A.S.
Cra. 7 # 84A - 29, Of. 301
Bogotá, Colombia.
PBX: (+57) (601) 743-2828

info@bismark.net.co

Síganos:



@BismarkColombia

Distribuidor exclusivo:



bismark.net.co